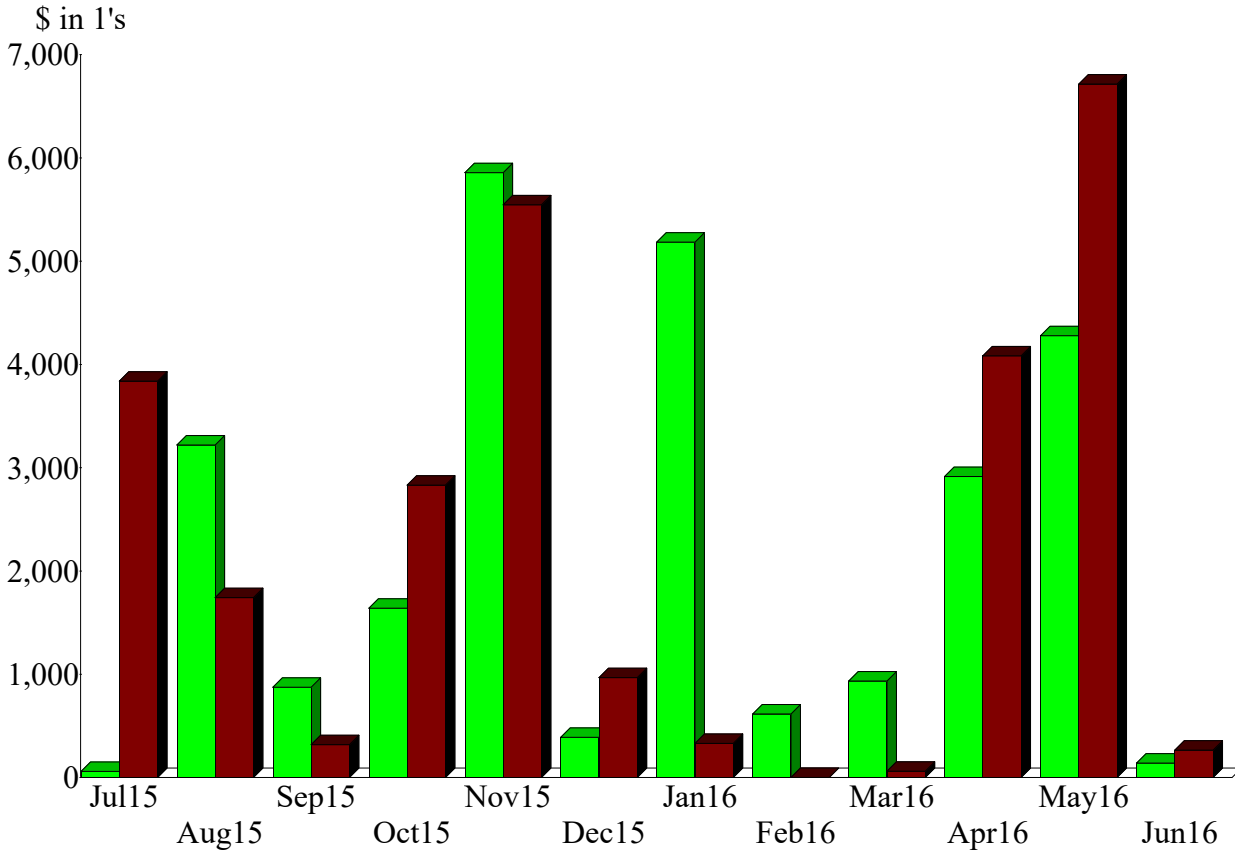
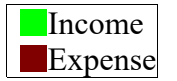
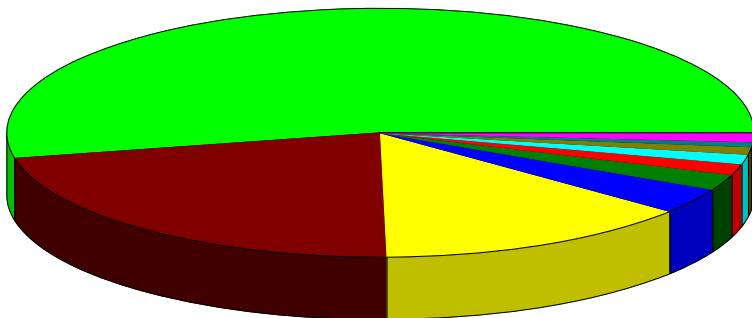


Income and Expense by Month  
July 2015 through June 2016



Expense Summary  
July 2015 through June 2016

Contract Services	53.35%
Sheet Music	22.09
Donations to Other Orgs	13.95
Operations	3.38
Merchandising	2.17
Facilities and Equipment	1.54
Other Types of Expenses	1.36
Event Supplies	1.04
Business Expenses	0.79
Credit Card Pymt Fees	0.34
Total	\$26,699.68



By Account